

## Percussion 1:

Suspended Cymbal, Triangle,  
Tambourine, Woodblock

# Foxtrot and Rumba

for chamber orchestra

## Percussion 2:

Pair of Bongos,  
Tenor Drum, Bass Drum

Charlie Barber

$\text{♩} = 120$

### 1. Balloons and Saxophones - Foxtrot

Triangle (mute)

*p*

Tenor Drum

Bass Drum

C

1.v.

27

*tr* **D** *tr*

*mf* *p* *mp* *mf* *mp*

*mp* *p*

*mp* *p*

Percussion

41

**F** Triangle (mute)

*p*

*mp*

*mp*

48

**G**

*p*

55

**H**

*p*

Bass Drum

*mp*

*p*

61

**I**

to Cymbal and Tambourine

*mf*

2

2

# Charlie Barber - Foxtrot and Rumba

4

## Percussion

67

Cymbal

Tambourine

Tenor Drum

**J** l.v.

*mp*

*p*

*mf*

*p*

73

*tr*

*mf*

*mp*

*mf*

*tr*

*p*

*mp*

*p*

78

**K**

*p*

*mp*

*tr*

*mf*

*mp*

*tr*

*p*

*mp*

*p*

*mp*

*p*

92 M

First staff:  $\text{2/4}$ ,  $p$ ,  $\text{2/4}$ ,  $\text{3/4}$

Second staff:  $\text{2/4}$ ,  $\text{3/4}$

Third staff:  $\text{2/4}$ ,  $\text{3/4}$

Charlie Barber - Foxtrot and Rumba

6

Percussion

97

**N**

mf

p

mp

mf

mp

mp

p

mp

p

104

**O**

mf

p

mp

mf

mp

mp

p

mp

p

111

**P**

mf

p

mp

mf

mp

mp

p

mp

p

118

**Q**

l.v.

to Triangle

Triangle

mp

p

mf

p

mf

p

mf

p

## Percussion

125 **Rit.**

*pp*

128

**A** ♩ = 132

Woodblock

*mp*

The image shows a musical score for the 'A' section of 'The Little Boat'. It consists of two staves. The top staff is for the melody, starting with a treble clef and a common time signature. The bottom staff is for the woodblock accompaniment, starting with a bass clef and a common time signature. The tempo is marked as ♩ = 132. The dynamics are marked as *mp* (mezzo-piano). The section is labeled 'A' and 'Woodblock'. The score includes a repeat sign at the beginning and end of the section.

# Charlie Barber - Foxtrot and Rumba

8

## Percussion

132 **B**

*mp*

Bongos

*mp*

136 **C**

*mf*

140 **D** Woodblock

*mf*

144

*f*

148



152 **E**

*mf* *f*

156

160 **F** Woodblock

*mp*

164 **G**

Charlie Barber - Foxtrot and Rumba

10

Percussion

**H**

168 Bongos



**I**



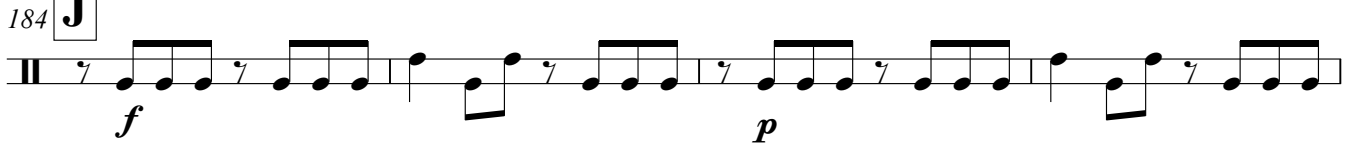
176



180



**J**

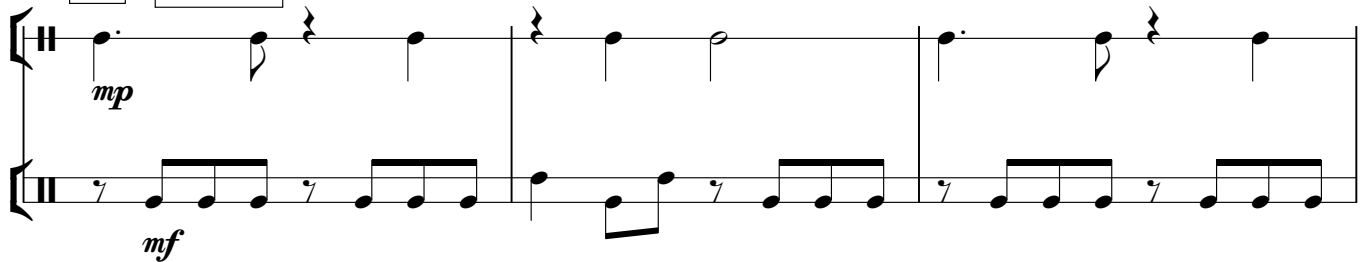


188

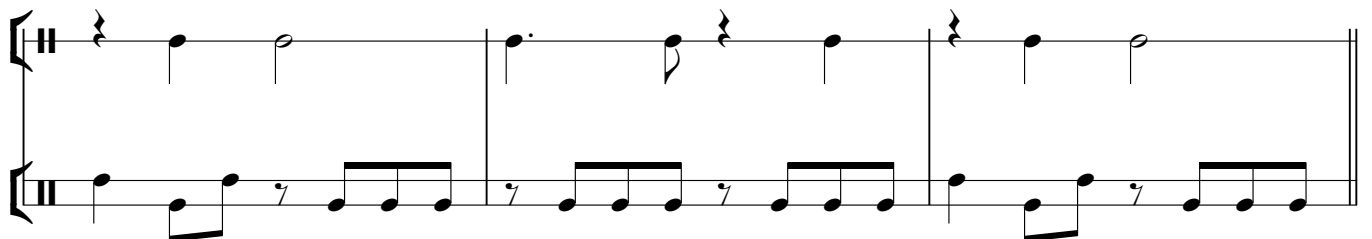


**K**

192 Woodblock



195



Percussion

198 **L**

*mf*

202 **M** Woodblock

*mp*

206 **N**

*mf*

*f*

209

*mf*

212 **O**

*mf*

216

*mf*